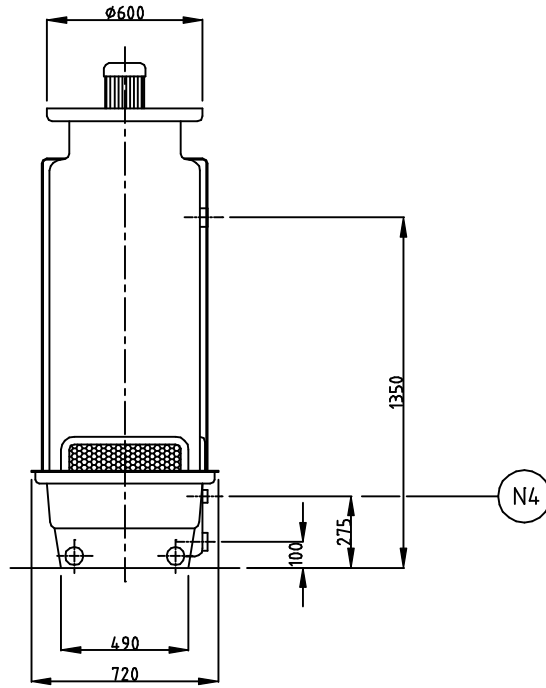
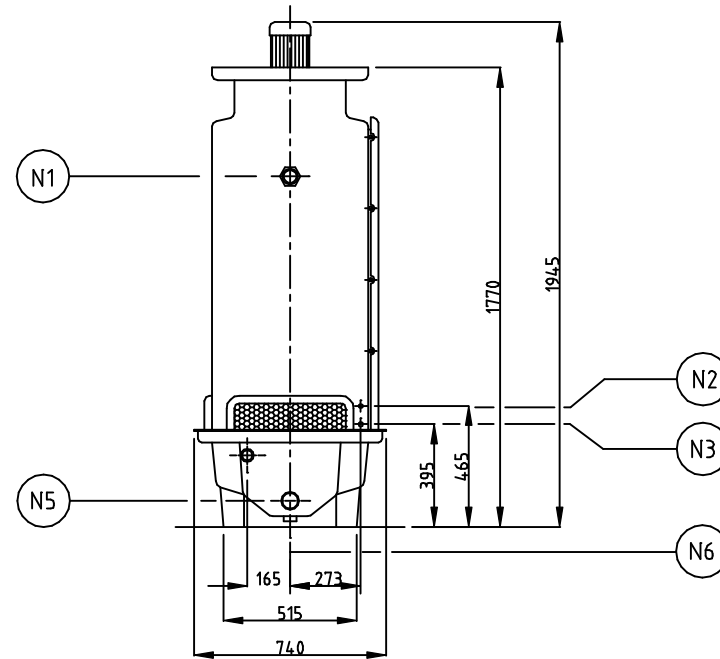


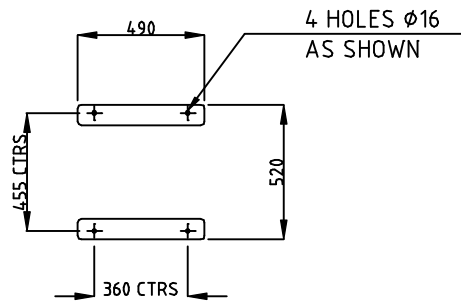
THIS DRAWING IS THE SOLE PROPERTY OF SUPERCILL AUSTRALIA. AND IS RETURNABLE ON REQUEST. IT IS TO BE TREATED AS CONFIDENTIAL, AND NOT TO BE COPIED OR COMMUNICATED TO ANY OTHER PERSON WITHOUT THE WRITTEN CONSENT OF SUPERCILL. IT MAY ONLY BE USED FOR MANUFACTURE WHEN ACCOMPANIED BY A WRITTEN ORDER.



ELEVATION



SIDE ELEVATION



FOUNDATION DETAILS

WEIGHT

DRY 50Kg
OPERATING 105Kg

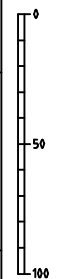
MOTOR / IMPELLER

SC10:
400V/0.32KW/0.8A
FE 050-SDK.4F.6 (or equivalent)

SC15:
400V/0.78KW/1.4A (or equivalent)

TERMINATION POINTS

N1-HOT WATER INLET NB50 BSP (F)-PVC
N2-QUICK FILL NB15 BSP (M)-BRASS
N3-MAKE UP WATER NB15 BSP (M)-BRASS
N4-OVERFLOW NB32 BSP (F)-PVC
N5-COLD WATER OUTLET NB50 BSP (F)-PVC
N6-DRAIN NB50 SINK PLUG PVC



REF. DRG. NO.	REFERENCE DRAWING TITLE	NO.	DESCRIPTION	REV. BY	DATE	APPR. BY	GENERAL NOTES	TOLERANCES	SURFACE FINISH	UNLESS OTHERWISE SPECIFIED	THIRD ANG. PROJ.	AUTOCAD R15	APPROVED-RS	SCALE	DATE	TITLE	DRG. NO.	REV. NO.	REV
1	2	3	4	5	6	7	8	9	10	11	12	13	14	15	16	17	18	19	20

A1

SUPERCILL AUSTRALIA
SHEPPARTON VIC 3076

SC10 / SC15
COOLING TOWER
GENERAL ARRANGEMENT

DATE: 26/1/2018
SCALE: 1:10