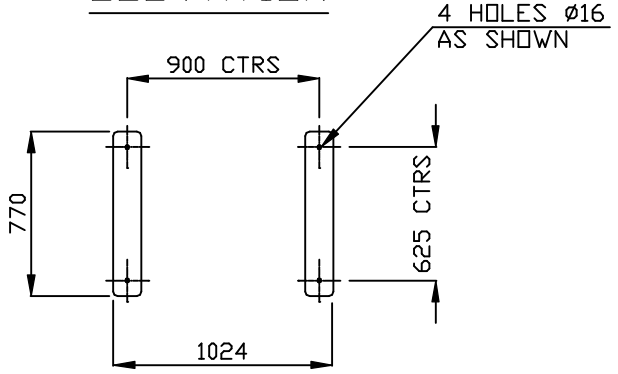


INSPECTION HOLE

FULL PANEL MAINTENANCE ACCESS

ELEVATION

SIDE ELEVATION



FOUNDATION DETAILS

WEIGHT

DRY 200 KG
WET 480KG

MOTOR

0.75kW 6 POLE FOOT MTD
TEFC 415-3-50

IMPELLER

820/9-9/25/PPG/4Z

TERMINATION POINTS

- N1-HOT WATER INLET NB80-TABLE "E"-PVC
- N2-QUICK FILL NB15 BSP(M)-BRASS
- N3-MAKE UP WATER NB15(M)-BRASS
- N4-OVERFLOW NB32 BSP(F)-PVC
- N5-COLD WATER OUTLET NB80-TABLE "E"-PVC
- N6-DRAIN NB50

| | | | | | |
|------|----------------|-------|---------|----------|------------|
| 5 | | | | | |
| 4 | | | | | |
| 3 | | | | | |
| 2 | | | | | |
| 1 | ORIGINAL ISSUE | | | | |
| REV. | DESCRIPTION | DRAWN | CHECKED | APPROVED | ISSUE DATE |

GENERAL NOTES:
-DO NOT SCALE
-ALL DIMENSIONS IN MILLIMETERS
-GENERAL TOLERANCE UNLESS OTHERWISE STATED.
LINEAR + 5, ANGULAR + 1°



| | | | | | | | |
|--------------|---------|-----------------|----|---------|---------------------|------------|-----------|
| CLIENT | NA | CONTRACT No. | NA | TITLE | SC45 | DRAWN | lps |
| LOCATION | NA | JOB No. | 03 | | COOLING TOWER | CHECKED | B.S. |
| EQUIPMENT | C/TOWER | DWG REPLACES BY | NA | | GENERAL ARRANGEMENT | APPROVED | B.S. |
| CAD FILE No. | SC45 | DWG REPLACES | NA | PLANT | NA | DATE | 26/4/2000 |
| SCALE | 1:25 | SEP. PARTS LIST | NO | DWG No. | SC45 | SHEET SIZE | A3 |
| | | | | | | REV | 2 |