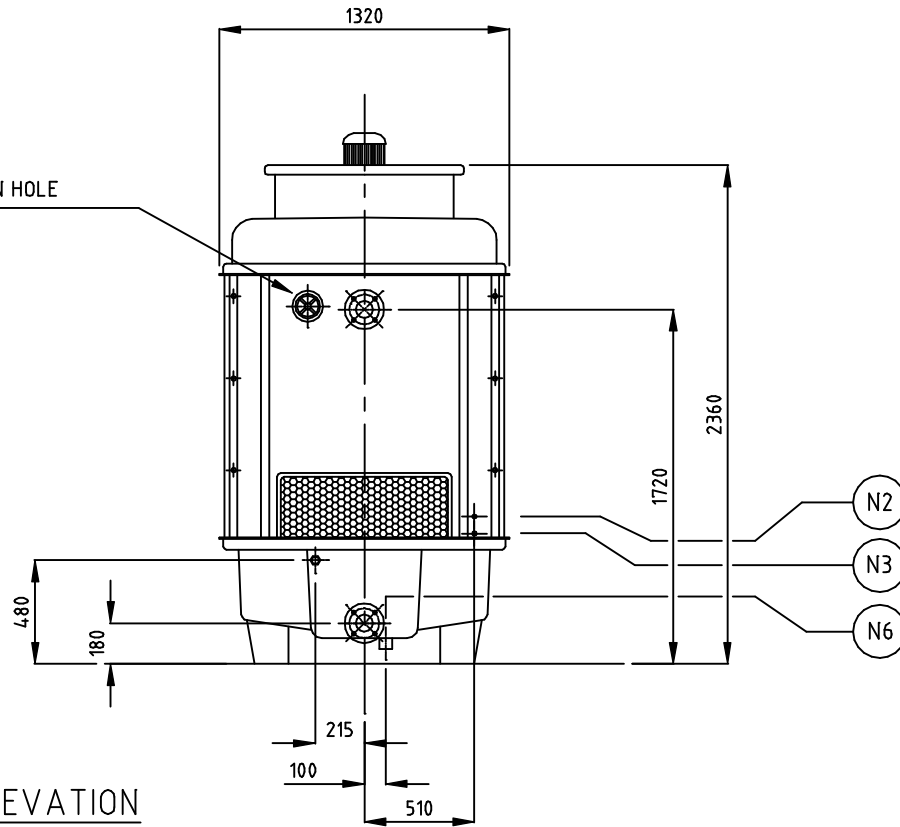
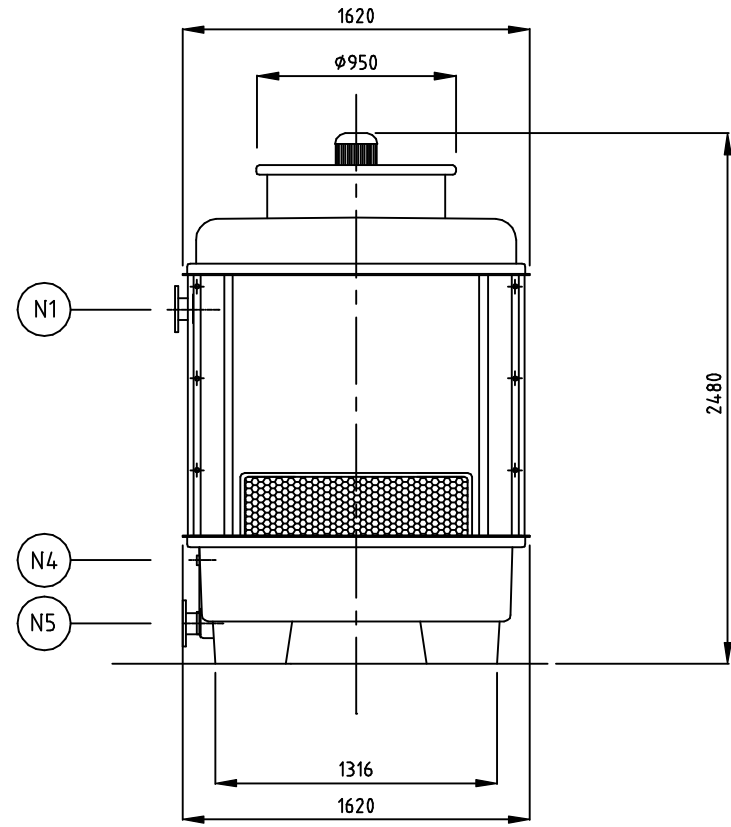


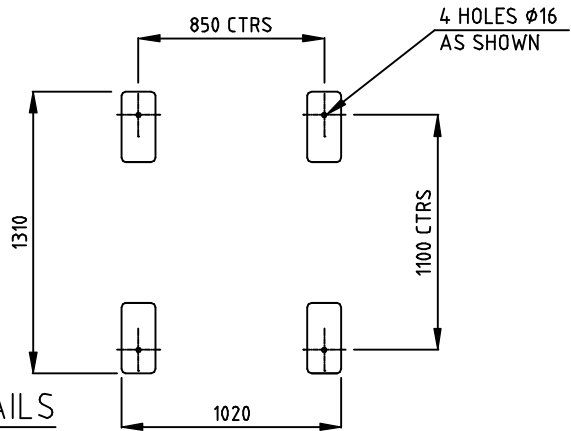
INSPECTION HOLE



ELEVATION



SIDE ELEVATION



FOUNDATION DETAILS

WEIGHT

DRY 325 KG  
WET 660 KG

MOTOR

2.2kW 6 POLE FOOT MTD  
TEFC 415-3-50

IMPELLER

820/9-9/PPG/4Z/4°

TERMINATION POINTS

- N1-HOT WATER INLET NB80-PVC TABLE 'E'
- N2-QUICK FILL NB15 BSP(M)-BRASS
- N3-MAKE UP WATER NB15(M)-BRASS
- N4-OVERFLOW NB32 BSP(F)-PVC
- N5-COLD WATER OUTLET NB80 BSP-PVC TABLE 'E'
- N6-DRAIN NB50 SINK PLUG PVC

5					
4					
3					
2					
1	Flanged				
0	ORIGINAL ISSUE				10/2/2000
REV.	DESCRIPTION	DRAWN	CHECKED	APPROVED	ISSUE DATE
1					
2					
3					
4					

GENERAL NOTES:  
-DO NOT SCALE  
-ALL DIMENSIONS IN MILLIMETERS  
-GENERAL TOLERANCE UNLESS OTHERWISE STATED.  
LINEAR + 5, ANGULAR + 1°

**SUPERCHILL**

Superchill Australia Pty Limited  
220 Victoria Way  
Bentley WA 6107  
Australia  
Tel: (81) 9789 6222 Fax: (81) 9791 1888

CLIENT	NA	CONTRACT No.	NA	TITLE	SC75 COOLING TOWER GENERAL ARRANGEMENT	DRAWN	BS
LOCATION	NA	JOB No.	10			CHECKED	B.S.
EQUIPMENT	C/TOWER	DWG. REPLACES BY	NA			APPROVED	B.S.
CAD FILE No.	SC75010	DWG. REPLACES	NA	PLANT	NA	DATE	10/2/2000
SCALE	1:25	SEP. PARTS LIST	NO	DWG No.	SC75010	SHEET SIZE	A3
						REV.	0